

\flat E major

Piano Sonata No.8, Op.13 "Pathetique"

II. Adagio cantabile

Ludwig van Beethoven

$E\flat$ $B\flat 7$ $E\flat$ $B\flat 7$ $E\flat$ $B\flat/D$ $Cm7$ $F7$ $B\flat$



$B\flat 7/A\flat$ $E\flat/G$ $C7$ $Fm7$ $B\flat 7$ $B\flat 7$ $E\flat$ $B\flat 7$ $E\flat$



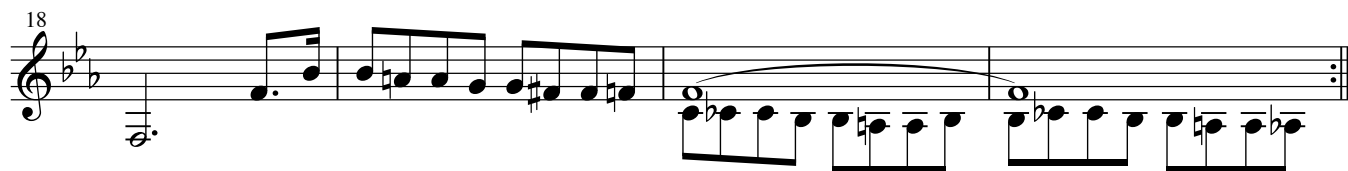
G Cm G Cm G7 Cm F7



Gm Cm7 B \flat F7 B \flat F7



$B\flat$ F7 $B\flat$



E major

Piano Sonata No.8, Op.13 "Pathetique"

II. Adagio cantabile

Ludwig van Beethoven

E B7 E B7 E B/D# C#m7 F#7 B



B7/A E/G# C#7 F#m7 B7 B7 E B7 E



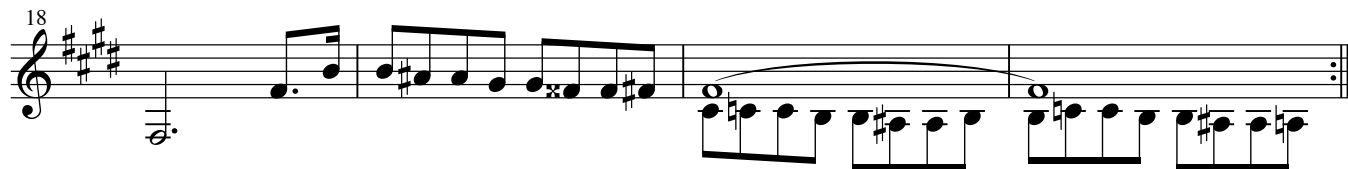
G# C#m G# C#m G#7 C#m F#7



G#m C#m7 B F#7 B F#7



B F#7 B



E major

Piano Sonata No.8, Op.13 "Pathetique"

II. Adagio cantabile

Ludwig van Beethoven

F C7 F C7 F C/E Dm7 G7 C



C7/Bb F/A D7 Gm7 C7 C7 F C7 F



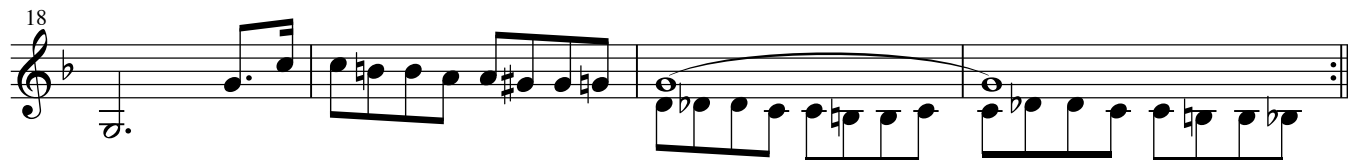
A Dm A Dm A7 Dm G7



Am Dm7 C G7 C G7



C G7 C



\flat G major

Piano Sonata No.8, Op.13 "Pathetique"

II. Adagio cantabile

Ludwig van Beethoven

G \flat D \flat 7 G \flat D \flat 7 G \flat D \flat /F E \flat m7 A \flat 7 D \flat



D \flat 7/B G \flat /B \flat E \flat 7 A \flat m7 D \flat 7 D \flat 7 G \flat D \flat 7 G \flat



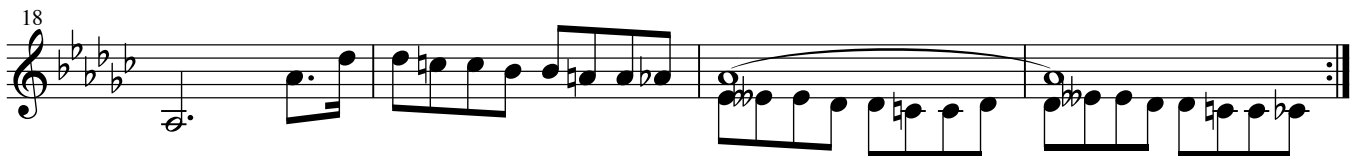
B \flat E \flat m B \flat E \flat m B \flat 7 E \flat m A \flat 7



B \flat m E \flat m7 D \flat A \flat 7 D \flat A \flat 7



D \flat A \flat 7 D \flat



G major

Piano Sonata No.8, Op.13 "Pathetique"

II. Adagio cantabile

Ludwig van Beethoven

G D7 G D7 G D/F# Em7 A7 D



D7/C G/B E7 Am7 D7 D7 G D7 G



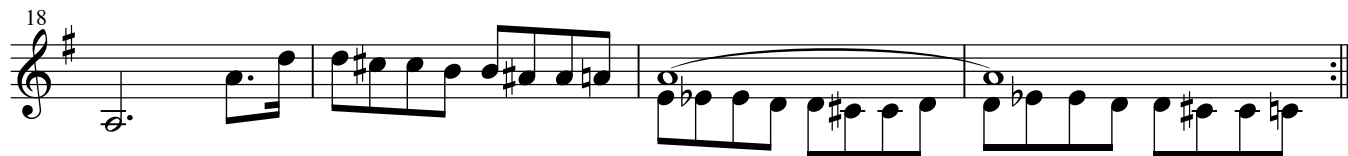
B Em B Em B7 Em A7



Bm Em7 D A7 D A7



D A7 D



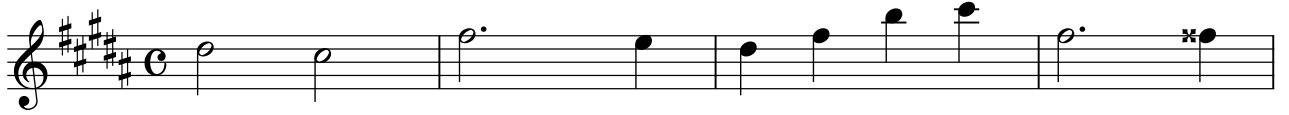
B major

Piano Sonata No.8, Op.13 "Pathetique"

II. Adagio cantabile

Ludwig van Beethoven

B F#7 B F#7 B F#/A# G#m7 C#7 F#



F#7/E B/D# G#7 C#m7 F#7 F#7 B F#7 B



D# G#m D# G#m D#7 G#m C#7



D#m G#m7 F# C#7 F# C#7



F# C#7 F#

